



***Please Note: This document will be updated as circumstances change. Please check the addendum at the end of the document for the most recent updates.**

Covid Protocols for the 2022-23 Academic School Year

(Updated as of February 1, 2023)

Overview:

- **The goal of this plan is to manage Covid-19 with adaptive protocols while providing quality, on-campus instruction.** This plan closely follows the most recent guidance from the [California Department of Public Health \(CDPH\)](#), the [Pandemic Recovery Framework](#) issued through the San Mateo County of Education and San Mateo Coalition for Safe Schools and Communities, [CDC K-12 Guidance](#), and has a strong emphasis on the following:
 - **Parents and Community Members:** *Encouraging vaccination and boosters for all eligible individuals to decrease COVID-19 rates throughout the community and to protect the most vulnerable.*
 - **Professional Community:** *Vaccines are required for all professional community members*
 - **Students:** *required for students ages 12+ to get vaccinated; strongly encouraged for all students*
 - *We reserve the right to require vaccination and boosters of eligible students. These requirements are continuously being evaluated by the Health and Safety Committee, and families will be notified of any updated decisions.*
 - Masking when required by the Health and Safety Committee. This can mean universal masking during outbreaks, or masking in specific situations at school.

- Optimizing ventilation through open windows and HEPA filters in every room.
- Maintaining normal school schedule as follows:
 - Middle School: 8:15am-3:30pm (M-Th); 8:15am-3pm (F)
 - TK-5: 8:30am-3:30pm (M-Th); 8:30am-3pm (F)
 - Gesher extended care: Early morning opens at 7:30am; After care open until 6pm (4pm the day before holidays).
- Adjusted all-school community gatherings and community members on campus but building access limited to certain hours or specific purposes.
- Prioritizing on-campus learning.
- Staying away from school if symptomatic and testing following COVID-19 symptoms.
- Requiring antigen COVID-19 responsive testing in response to exposures and screening testing upon return from breaks as an additional safety layer.

This will be Wornick's framework for the 2022-2023 academic school year. Should conditions change as determined by our Health and Safety Committee, San Mateo County, or the CDPH, we will notify parents and our community. We will revise this document as necessary.

All families are required to sign an acknowledgement that they have read, understand, and are committed to following the protocols set forth in this document. This form will be emailed to all families. Please sign and return by **August 16, 2022**.

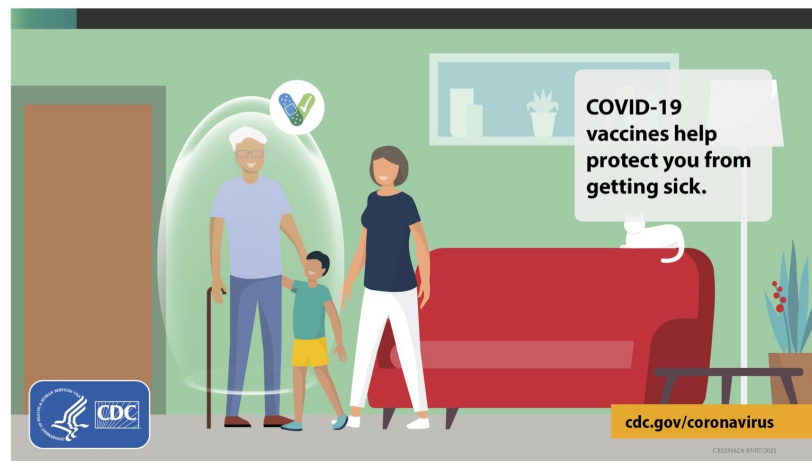
We continue to urge all families to prioritize the health and safety of our community - our fates are intertwined and we continue to value the health of the most vulnerable in our community.

Safety Measures for Our Community

Vaccinations

The CDC, CDPH, and San Mateo County strongly recommend that all who are eligible receive the COVID-19 vaccination and remain up to date with boosters. Getting vaccinated prevents severe illness, hospitalizations, and death. All eligible unvaccinated people should get vaccinated. With variants, this is more urgent than ever.

Flu vaccination is strongly encouraged for all students.



a. Employees

We require all employees to be fully vaccinated against COVID-19. Documentation is required and kept on file. At this time, all of our current and new employees have been fully vaccinated.

b. Students

At this time, we require students who are 12 and older to be vaccinated. If you are requesting an exemption from this requirement and did not already receive one during the 2021-22 school year, please email info@wornickjds.org. We strongly recommend students younger than 12 receive the Covid vaccine.

There may be limitations applicable to eligible unvaccinated students including but not limited to: certain school trips involving air travel, field trips where the provider requires vaccines, and access to the PJCC for middle schoolers after school for activities not offered by Wornick. **We reserve the right to require vaccinations and boosters of eligible students and this matter is continuously being reviewed by the Health and Safety Team.**

Ventilation Recommendations

a. Ventilation will be prioritized as a way to mitigate the risk of transmission. Ventilation includes open windows and doors where available, as well as HEPA filters in every room, and will be replaced as appropriate.

Smoke Days

Should the Air Quality Index (AQI) exceed 100, windows and doors will be closed and additional HEPA filters will be added in every classroom to assist with air filtration. PE, recess, lunch, and afterschool sports will be modified when air quality is between 100-150 AQI. If we anticipate an AQI above 150, school may be closed. As needed, notification due to AQI will be sent via email the evening before at 7pm.

Per the CDC, N95 and KN95 masks can provide protection from wildfire smoke.

Masking

Masks remain an effective tool in reducing the transmission of Covid-19.

a. Per the CDPH and San Mateo County, masks are strongly recommended for indoor activities. This is subject to change depending on conditions.

b. Masks (well-fitting N95, KF94, KN95, surgical) are required for parents and students on Wornick's campus in the following circumstances:

i. When a person tests positive, quarantines for at least 5 days, and is then cleared to return with a negative antigen test result on day 6-10, said persons are required to wear a mask on days 6-10.

ii. Masks are required for anyone experiencing any cold symptoms for the duration of the symptoms.

iii. For asymptomatic people who are exposed to someone with Covid-19 in their household, they must wear a mask for 10 days from the date of exposure.

c. Students should keep additional masks in their backpacks should they need to change them during the day.

d. No person wishing to wear a face mask will be prevented from doing so.

e. The main office will provide a disposable face covering to anyone at school who forgets to bring one that day.

Eating at School

a. All classes will continue to eat lunch and snack outdoors, with the exception of rainy days. Students may use the field, play structure area, or blacktop for playtime and may interact with other classes.

b. Hot lunch will be served indoors and it will be taken outside to be eaten, except on rainy days when students will eat in the classrooms. We will continue to use single use, compostable plates, and utensils for hot lunch.

c. Lunch times will be staggered with the following eating times, followed by 30 minutes of play time.

- TK/Kinder - 11:45am-12pm at the blue picnic tables.
- First - third grade - 12-12:15pm at the blue picnic tables.
- Fourth and fifth grade - 12:15-12:30pm at the blue picnic tables.
- Sixth, seventh, eighth grades - 12:15-12:30 on the upstairs patio.

Recess for TK/Kindergarten through third grade will be outside from 10:10-10:25am, then for fourth grade through eighth grade from 10:30-10:45 am.

Testing

CDPH is shifting to antigen testing for the 2022-23 school year. Accordingly, antigen tests are the primary option for Covid testing.

a. Wornick requires antigen testing in the following scenarios:

- i. Pre-entry testing before the first day of school and following any breaks.
- ii. Responsive testing following an exposure or experiencing symptoms.
- iii. As needed, prior to community events held indoors or during periods of high transmission, as determined by the Health and Safety Committee.

b. Prior to School Testing. Covid antigen testing will be required for all students and staff prior to the first day they return to campus. Please test your student after 7pm the night before, or the morning of, the day they return to campus. **You do not need to submit the copy of the results.** If your student is attending a Middle School Fall Sports Training or Hebrew Ulpan class for transfer non-native Hebrew students in grades 2-6, a negative test must be taken the evening before, or the morning of, the day they return to campus

c. Antigen tests can be obtained at no cost through the [government](#), through [insurance reimbursement](#), or purchased through retailers and pharmacies.

d. We will keep a supply of antigen tests for symptomatic and close contact cases.

e. Wornick will offer testing to employees in accordance with Cal/OSHA requirements.

Hand Hygiene

a. Hand-washing will be taught, reinforced, and promoted throughout the day. The community will be encouraged to avoid contact with one's eyes, nose, and mouth, and covering coughs and sneezes among students and staff.

b. Time will be allotted throughout the day for hand washing. It will be required before and

after eating, after using the toilet, after handling garbage, or removing gloves.

c. The school will have adequate supplies to support healthy hygiene behaviors, including soap, tissues, no-touch trash cans, face coverings, and hand sanitizers with at least 60 percent ethyl alcohol for staff and children who can safely use hand sanitizer.

Cleaning

a. Wornick staff will continue to perform cleaning and disinfection throughout the school day, as well as deep cleaning at night. Staff are using CDC approved cleaners.

b. If a facility has had a sick person with COVID-19 within the last 24 hours, the spaces occupied by the infected individual will be cleaned AND disinfected.

Staying Home When Feeling Sick and Testing

a. Students, teachers, staff, and volunteers who have symptoms of infectious illness, such as the flu or COVID-19, should stay home and be referred to their healthcare provider for testing and care. **Please notify health@wornickjds.org and stay home should a community member experience any of these symptoms including but not limited to fever, chills, headache, cough, shortness of breath, fatigue, body aches, loss of smell/taste, sore throat, runny nose, nausea, vomiting, or diarrhea.**

b. Anyone with these symptoms of COVID-19 should not return to campus until:

1. 24-hours have passed since a fever without the use of fever-reducing medications.
2. Symptoms have improved and fever reduced without the aid of a fever reducing medication.
3. They produce a negative antigen COVID-19 test, or a healthcare provider has produced documentation that the symptoms are typical of a chronic condition, or a health care provider has confirmed an alternative diagnosis, or at least 10 days have passed since onset of symptoms.
4. They receive approval from health@wornickjds.org to return to campus.

When Students or Staff Have Covid-19 Symptoms

The CDPH recommends that those with symptoms of COVID-19 take the following steps, regardless of their vaccination status:

- a. Self-isolate and take or be administered an antigen test as soon as possible to determine infection status.
- b. Remain in isolation while waiting for testing results. If not tested, they should continue isolating for 10 days after the day of symptom onset, and if they cannot isolate, should wear a well-fitting mask for 10 days.

- c. Consider continuing self-isolation and retesting with an antigen test in 1-2 days if testing negative, particularly if tested during the first 1-2 days of symptoms. Testing between days 3-5 is advised.
- d. Continue to self-isolate if the test result is positive, follow recommended actions for isolation and contact a healthcare provider about available treatments if symptoms are severe or they are at high risk for serious disease or if they have any questions concerning their care.

When Students and Staff Are Diagnosed with Covid-19

Everyone who is infected with COVID-19, regardless of vaccination status, previous infection, or lack of symptoms, should follow the recommendations listed in the [CDPH Guidance Isolation and Quarantine for the general public.](#)

Isolation Table

Vaccination Status	Requirements for Staff/ Recommendations for Students
Everyone, regardless of vaccination status, previous infection, or lack of symptoms.	<ul style="list-style-type: none"> • Stay home for at least 5 days after start of symptoms (or after date of first positive test if no symptoms). • Isolation can end after day 5 if symptoms are not present or are resolving and a diagnostic specimen* collected on Day 5 or later tests negative. • If unable to test, choosing not to test, or testing positive on Day 5 (or later), isolation can end after Day 10 if fever-free for 24 hours without the use of fever-reducing medications. • If fever is present, isolation should be continued until 24 hours after fever resolves. • If symptoms, other than fever, are not resolving, continue to isolate until symptoms are resolving or until after Day 10. • If symptoms are severe, or if the infected person is at high risk of serious disease, or if they have questions concerning care, infected persons should contact their healthcare provider for available treatments. • Per CDPH masking guidance, infected persons should wear a well-fitting mask around others for a total of 10 days, especially in indoor settings. <p>*Antigen test preferred.</p>

How to Count Five Days for Isolation

If you develop symptoms after testing positive	Your 5-day isolation period should start over. Day 0 is your first day of symptoms. Follow the recommendations above for ending isolation.
If you had COVID-19 and had symptoms	Isolate for at least 5 days. To calculate your 5-day isolation period, day 0 is your first day of symptoms. Day 1 is the first full day after your symptoms developed. You can leave isolation after 5 full days.
If you test positive for COVID-19 and never develop symptoms	Isolate for at least 5 days. Day 0 is the day of your positive viral test (based on the date you were tested) and day 1 is the first full day after the specimen was collected for your positive test. You can leave isolation after 5 full days.

Source: **CDC**

When Students or Staff Are Exposed to Covid-19

When there is a positive case among a staff member or a student in the community, and that individual has been on campus when they were positive or likely to be positive, we will communicate it with families and professionals in that grade.

All students and staff members with known exposures to persons with Covid-19 should follow CDPH recommendations listed in the table below:

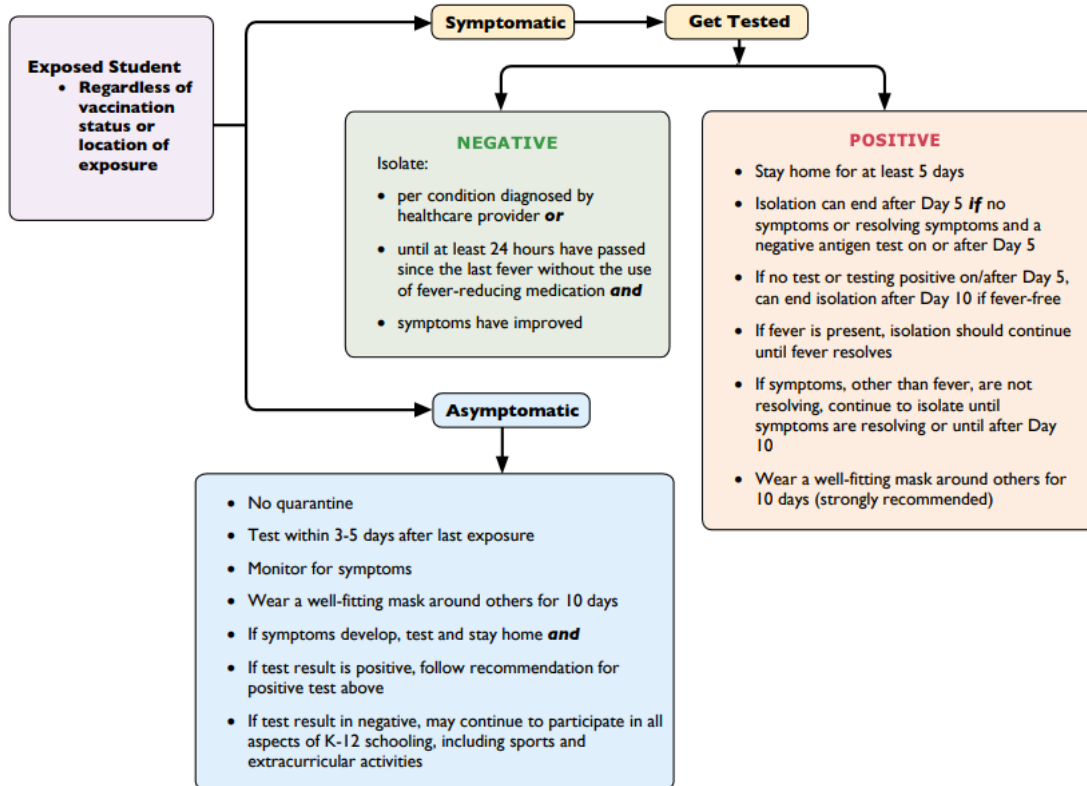
- Exposed students may continue to take part in all aspects of schooling, including sports and extracurricular activities, unless they develop symptoms or test positive for COVID-19. They should test, report positive test results to the health@wornickjds.org, and follow other components of this guidance.
- Students should stay home if they are showing signs and symptoms of COVID-19 and get tested. If negative, retest between days 3-5.
- Staff who have been exposed can continue to stay at school; they do not have to quarantine but they do have to comply with testing requirements.
- All exposed persons are recommended to wear a well-fitting mask for 10 days from the date of exposure, and required if the exposure is in their household.

Asymptomatic Employees and Students Who Are Exposed to Someone with COVID-19 (No Quarantine)

Asymptomatic Persons Who Are Exposed to Someone with COVID-19 (No Quarantine)	Recommended Actions
<p>Everyone, regardless of vaccination status.</p> <p>With the new variants, SMCH is finding people are being reinfected within a few weeks of having COVID-19 and now recommends that schools test exposed individuals even if they had COVID-19 during the last 90 days.</p>	<ul style="list-style-type: none"> • Test within 3-5 days after last exposure. • Per CDPH masking guidance, close contacts should wear a well-fitting mask around others for a total of 10 days, especially in indoor settings and when near those at higher risk for severe COVID-19 disease (see masking section below for additional information). • Strongly encouraged to get vaccinated or boosted. • If symptoms develop, test and stay home (see earlier section on symptomatic persons), and • If test result is positive, follow isolation recommendations in the Isolation table.

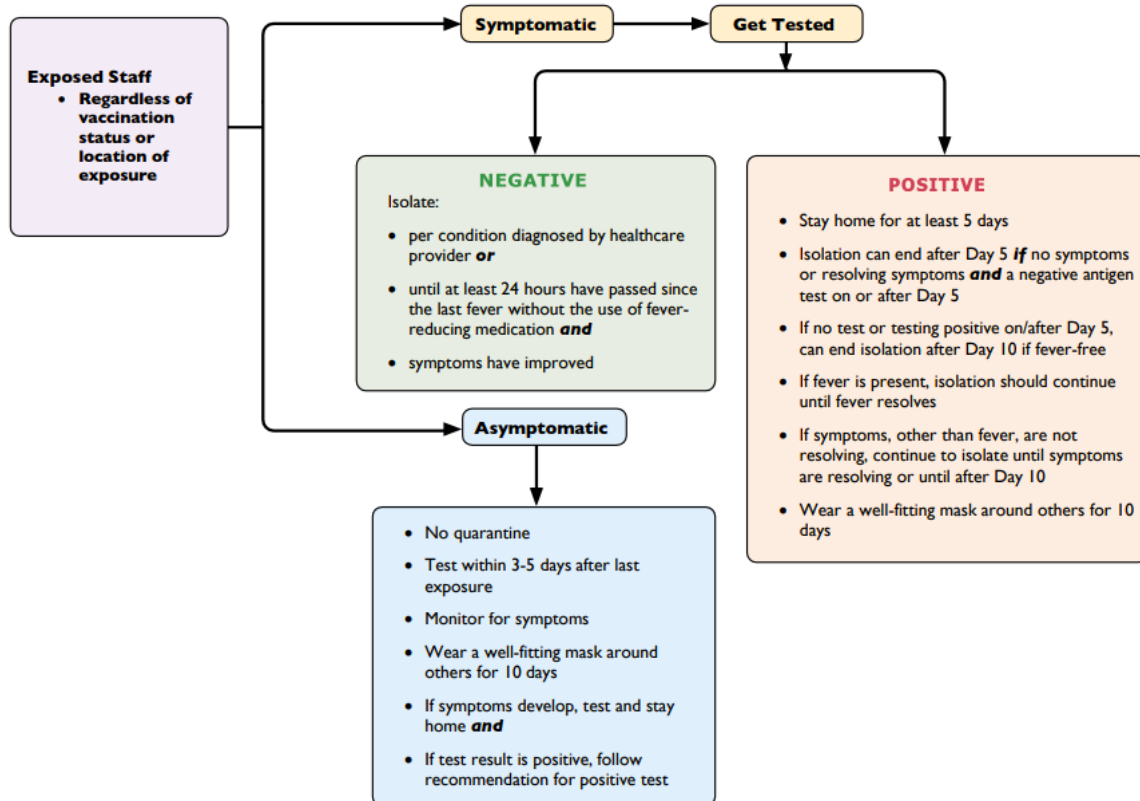
Please see the below flow charts for student and staff exposures:

COVID-19 Student Exposure (CDPH)



COVID-19 Staff Exposure (CDPH)

Note: With the new variants, SMCH is finding people are being reinfected within a few weeks of having COVID-19 and now recommends that schools test exposed individuals even if they had COVID-19 during the last 90 days.



On-Campus Gatherings, Visitors, and Volunteers

“Community” is one of the first words that comes to mind when people think of Wornick, and we know that in-person activities are more impactful for community building than virtual ones. Parents are welcome on campus for drop off and pickup and for campus events. Parents may enter the building and check in at the office when volunteering, and when they need to conduct business with the main office. Visits to the main office are limited to drop off/pickup times, when a parent is volunteering, or when a parent needs to drop off or pick up a student outside of the normal times. It is still best practice to notify the office of any pick up outside of regular hours prior to arrival to allow teachers to prepare for their departure. Parents should not be in the hallways or lobby so that we can ensure the security of our students and operations of our educational program. Parents are invited to congregate at the blue tables or in the Rose Garden during drop off/pickup times, volunteering, or meeting times.

We expect any parents and family members visiting Wornick's campus to comply with all safety protocols set forth in this document, including masking following exposures or when experiencing symptoms but testing negative.

- a. Parents and other persons authorized will be allowed to choose between pick up via the drive through line in Wornick's parking lot or parking in the lot (or PJCC overflow parking lot) and walking in to pick up their student. Detailed instructions are included in the section on drop off and pick up.
- b. We look forward to hosting gatherings at Wornick, both indoors and outdoors. For any indoor gatherings, we will issue safety protocols ahead of those events that reflect conditions at that time. At this time, masking is optional.
- c. Parent volunteers will have opportunities to come on campus. Please check in at the main office upon arrival, and follow any safety protocols in place at that time.
- d. Hot lunch servers will be inside the building. Masking is optional. Surfaces that come in contact with food will be washed, rinsed, and sanitized after meals.

Case Reporting

Schools are required to report cases of communicable diseases, including COVID-19, to the local health agency per California Code of Regulations (CCR) Title 17, §2508. Schools are also required to notify employees who may have been exposed to COVID-19 and to report workplace outbreaks to the local health department per AB 685.

a. Wornick will notify – to the extent allowable by applicable privacy laws – teachers, staff, and families of students who were close contacts as soon as possible (within the same day if possible) after they are notified that someone in the school has tested positive.

b. Per Cal/OSHA guidance, Wornick will:

- i. Contact the local health department immediately but no longer than 48 hours after learning of three or more COVID-19 cases to obtain guidance on preventing the further spread of COVID-19 within their workplace.

- ii. Maintain accurate records and track all COVID-19 cases while ensuring medical information remains confidential. These records must be made available to employees, authorized employee representatives, or as otherwise required by law, with personal identifying information removed.

- iii. Report a COVID-19-related serious illness or death immediately to the nearest Cal/OSHA enforcement district office.

Remote Learning Policy

We are prioritizing on campus learning for the benefit of our students. As we shift into living with and managing Covid-19, Zoom will only be available in these limited cases:

- a. In grades 4-8, if the student is quarantining or isolating for a Covid-19 related reason and the student is experiencing no symptoms.

b. In such an event, the parent must notify and obtain approval from the main office at info@wornickkids.org and the homeroom teacher. Parents must continue to notify the teacher and office if a student must stay home for the above reasons and qualify to Zoom into the class. The links will be in the student's Google calendar. A Zoom room will not be opened unless the office and teacher are notified.

c. Remote learning is not allowed for vacation or travel of any kind.

Packaged Goods for Birthdays and Celebrations

Kosher prepackaged snacks will be allowed for birthday celebrations. Please coordinate with your student's teacher two weeks prior to bringing them to school. Packaged goods should be vegetarian/nut free/dairy or pareve with a hechsher. Please see the Family Handbook or ask the main office if you have questions regarding hechsher symbols or verifying if an item is Kosher.

Drop Off and Pick Up

Middle school starts at 8:15am and TK-5 grades start at 8:20am. Students may be dropped off as early as 7:30am and should arrive with sufficient time to be seated in class by 8:15am for middle school and to walk to class for TK-5 by the 8:20am bell. All drop offs will be in the main Wornick parking lot off South Road. **Drop off/pick up is not currently allowed on Balclutha Road.** Please plan to arrive 15 minutes prior to your student's start time, or you may be waiting in a line of cars with PJCC Preschool traffic.

We are happy to welcome parents back onto campus for drop off until 8:20am and pick up at the end of the day. If you are arriving for morning Gesher (7:30am start), please use your token to open the gate and walk your student into the play structure or field until they are comfortable to join Gesher friends independently. After 8am, you can either drop your student at the main gate by driving through the drive through line in the parking lot or parking and walking them into the playground or field. Middle school students will go to the upstairs patio at 8am, will go to their lockers at 8:10am, and classes will start at 8:15am. **TK-5th grade will line up on the field behind large signs with their grade. At 8:20am, their teacher will escort them to their classroom.** Parents should say goodbye to their students before their students line up to make transitions easier.

After school, TK/Kindergarten students will meet their loved ones in the Rose Garden and older students can be met on the field, or called to the garden, or cars. **If you park and walk in to pick up your child, please be reminded that teachers' priority is supervising the students, so please save conversations for scheduled meetings where the teacher can devote their attention to you.**

When entering the lot, please form a line to the right of the two lanes in the parking lot and let your student out safely on the right hand side of your vehicle when you get to the gate. If you plan to park and walk in, please either park in the overflow lot at the PJCC and walk, or if there is space available, use the left hand lane when entering the Wornick lot to find an open spot. If you see someone attempting to exit their spot, please be courteous and let them. While we

are all very excited to begin school again, please take a moment to remember that when you are driving on to campus, there are many small humans that do not register large vehicles. Please be cautious, abide by the signs and speed limits, and be patient.

Pedestrians and bike riders need to enter the main gate at the parking lot near the Rose Garden.

Middle school students are allowed to walk or bike to and from campus while together. Middle school students also have the opportunity to leave campus following school to walk to a friend's house, go to Starbucks, etc. Written permission is required via FACTS.

Gesher

Gesher, our extended care program after school, will be offered. Students will come from their class, check-in outside and have time for play, snack, and homework outside. Gesher may use an outdoor tent or Room 112. To pick up students from Gesher, please park in the main parking lot, use your token to enter the main gate, walk to the play structure to pick up your student, and sign out using the FACTS system on the available device. Learn more about Gesher [here](#).

Individualized Support

Karen Bendelman, our Director of Learning Support, and Sara Calonico, our School Counselor, are available to help students who are struggling with academics, interpersonal relationships, or just need to talk.

COVID-19 Safety Planning Transparency

As we did over the past few years, we will continue to provide transparency to the schoolwide community regarding the school's Covid safety plans. Our COVID-19 Safety Plan is accessible at wornickjds.org. If addendums are added, the school wide community will be notified.

Understanding Risks

In-person learning is a measured attempt to provide quality education for our students, while minimizing risks. We cannot guarantee no risks and it is possible the pandemic could affect our community.

We continue to ask all families to be responsible community citizens and follow the guidelines outlined in the CDC.

Communication Samples for Suspected Exposure

[Exposure Notices – Student and During Surges](#)

[Cal/OSHA Sample Notice of Potential COVID-19 Exposure to Employees](#)

[Cal/OSHA Sample Notice of Potential COVID-19 Exposure to Contractors](#)

[Additional Communication Resources for Schools](#)

Additional Resources

[Testing Resources and Guidance from the California Department of Health](#)

Addendum effective October 12, 2022

Changes to Health Plan on Rainy Days

With the replacement of the turf field and the removal of some tents, our school currently does not have as many shaded and rain proof areas. While we still prioritize eating outdoors during snack and lunch time, we will not be able to offer that as an option for our entire school on rainy days going forward. Effective immediately, on rainy days students may be asked to eat indoors for snack and lunch time. Since some of our families are still choosing to mask indoors on a regular basis, we will make efforts to eat spaced out when we have to eat indoors and offer the opportunity for students to put masks back on before students resume play or activities. We will still have some areas that offer outdoor rain protection but we will prioritize classes with recent positive cases if we are able to use them.

Addendum effective November 7, 2022

Parents may enter the building and check in at the office when volunteering, and when they need to conduct business with the main office. Visits to the main office are limited to drop off/pickup times, or when a parent needs to drop off or pick up a student outside of the normal times. It is still best practice to notify the office of any pick up outside of regular hours prior to arrival to allow teachers to prepare for their departure. Parents should not be in the hallways or lobby so that we can ensure the security of our students and operations of our educational program. Parents are invited to congregate at the blue tables or in the Rose Garden during drop off/pickup times, volunteering, or meeting times.

Masking is optional for hot lunch servers.

The school will not be checking vaccine cards for volunteers.

Gesher extended care may use an outdoor tent or Room 112.

We will continue to prioritize outdoor all school events. There may be gatherings of multiple grades indoors, and Chavurah meetings will take place indoors.

Masking is currently optional for indoor gatherings.

Addendum effective February 1, 2023

Masking following exposure

Our school will continue to notify classrooms when there is an exposure as a consequence of students or professionals testing positive for COVID-19. Wornick will no longer require individuals who were exposed by their classmates or teachers to mask for ten days following exposure. We will however continue to recommend that individuals mask in line with current [CDC recommendations](#). We will also continue to recommend that individuals test between days 3-5 following exposure.

When masking is still required

Students are still required to wear a mask when someone in their household has tested positive for COVID-19. Students with a household positive case should test immediately when they discover someone in their household tested positive and again 3-5 days after. They should wear a mask for 10 days following exposure. Please continue to notify health@wornickjds.org of household positive cases.

Masks will continue to be required for students with active COVID-19 symptoms who test negative on household tests, and those who test positive and are cleared with a negative test on days 6-10.

If you would like your student to wear a mask for any reason and you are concerned about them following through with that request, please reach out to health@wornickjds.org and the admin team will be in touch with your students' teachers.

Community gatherings

Our school will be returning to holding all-school community gatherings inside the Ulam Gadol. We will welcome parents back into the Ulam Gadol (multi-purpose room) for Tefillah on Thursday mornings and Kabbalat Shabbat on Friday mornings, though we are hopeful to have Friday mornings outdoors, when weather permits. We look forward to having parents rejoin us, and we gently remind parents not to congregate in the lobby or hallways following gatherings in the Ulam.